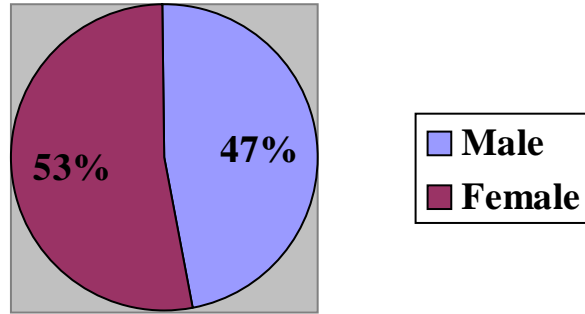


## ADULTS

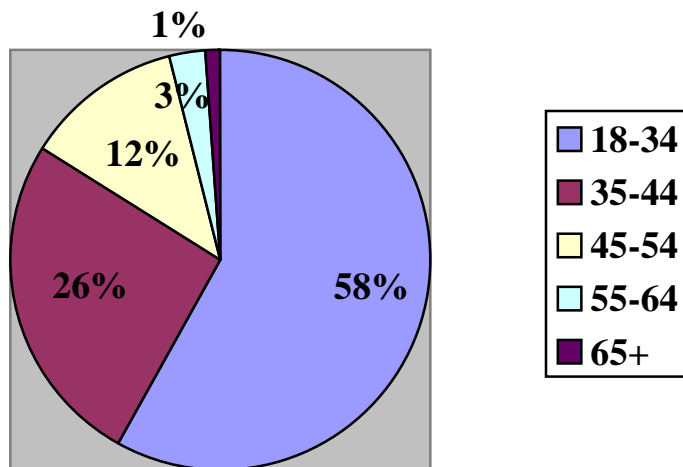
### Sex of respondent

	Male	Female
Adults	47	53



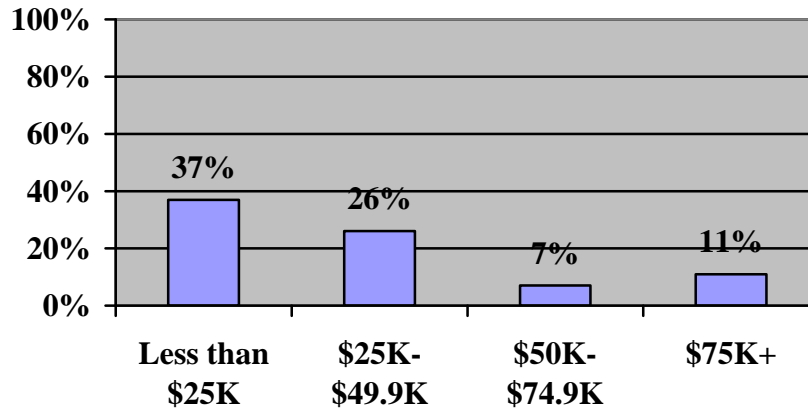
### Age

	Adults
18-34	58
35-44	26
45-54	12
55-64	3
65+	1



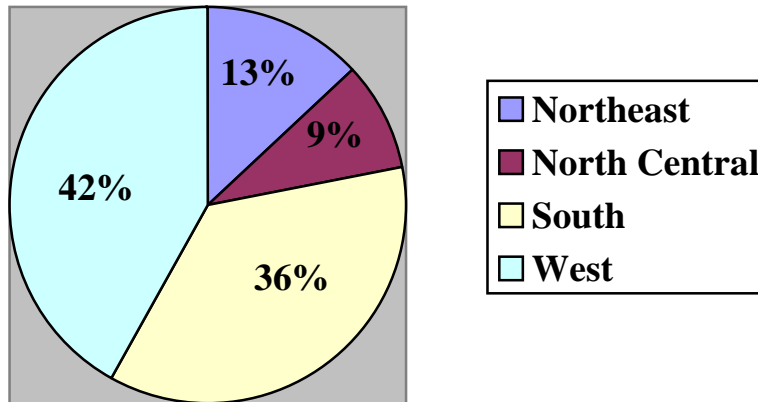
## Household Income

	Less than \$25K	\$25K-\$49.9K	\$50K-\$74.9K	\$75K+
Adults	37	26	7	11



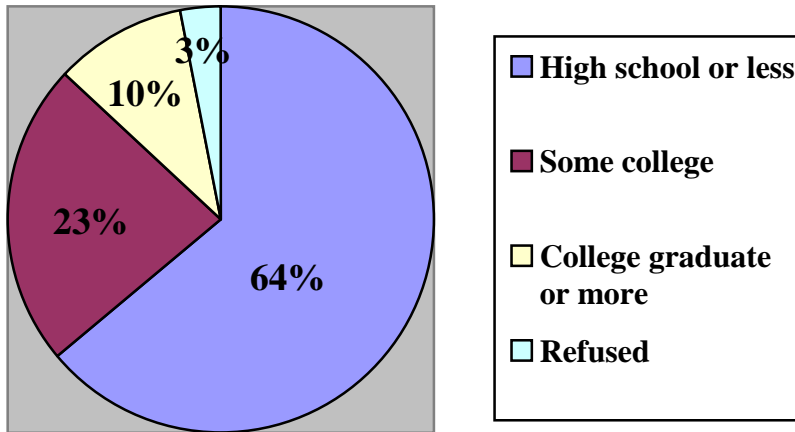
## Region

	Northeast	North Central	South	West
Adults	13	9	36	42



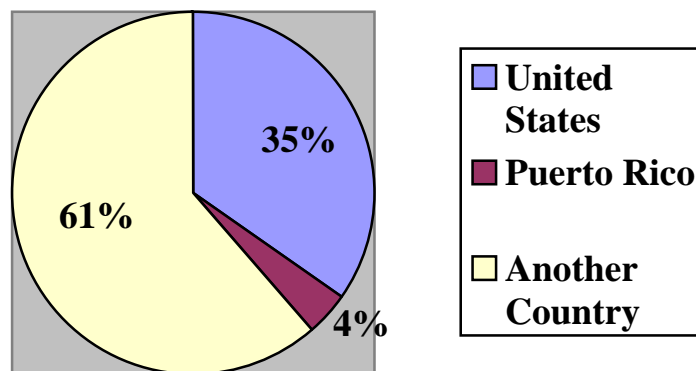
## Education

	Adults
High school graduate (37) or less (27)	64
Some college (20) or technical/other (3)	23
College graduate (8%) or post-graduate (2%)	10
Refused	3



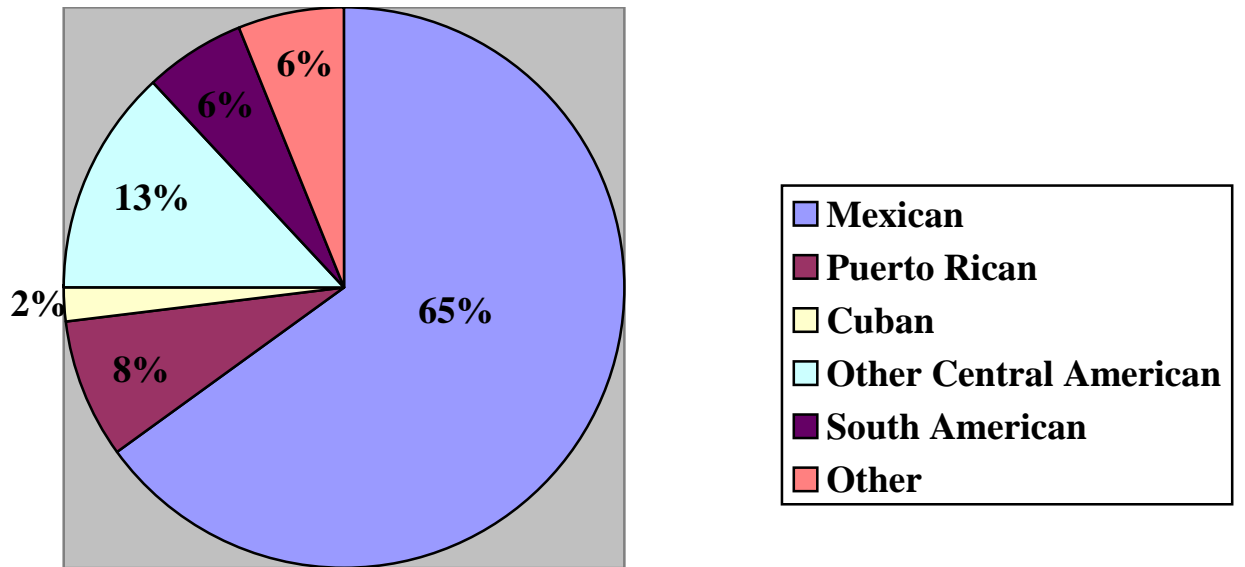
## Place of Birth

	Adults
United States	35
Puerto Rico	4
Another country	62
Don't know	--
Refused	*



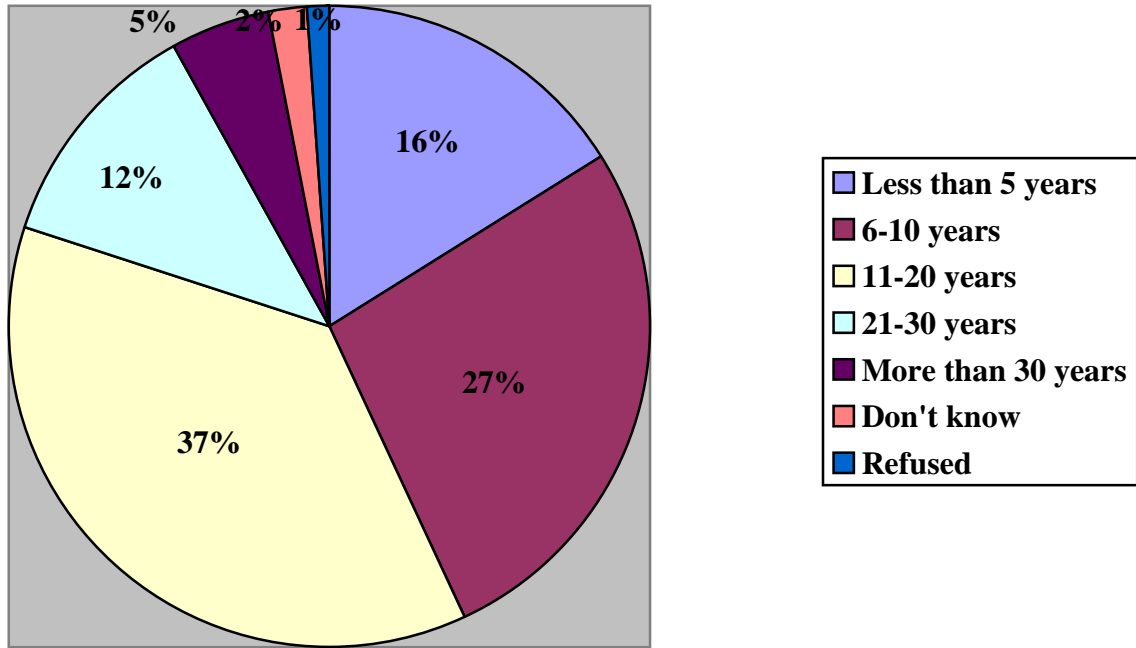
## Heritage

	Adults
Mexican	65
Puerto Rican	8
Cuban	2
Dominican	2
Salvadoran	5
Other Central America	6
Other South America	6
Other	6
Don't know	1
Refused	*



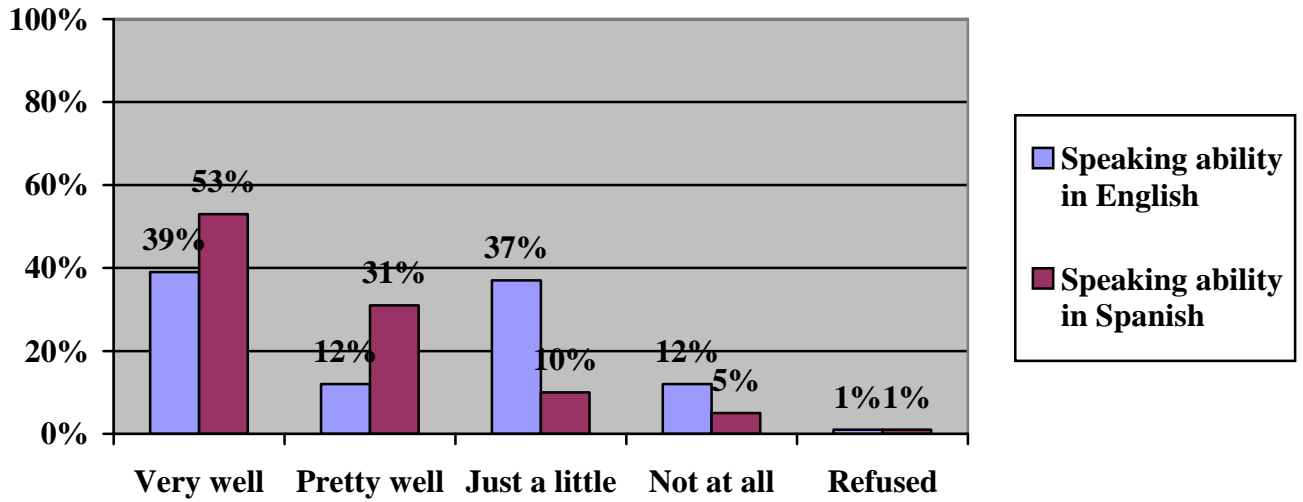
### Years in the U.S.

	Less than 1 to 5 years	6-10 years	11-20 years	21-30 years	31+ years	Don't know	Refused
Adults born outside the U.S.	16	27	37	12	5	2	1



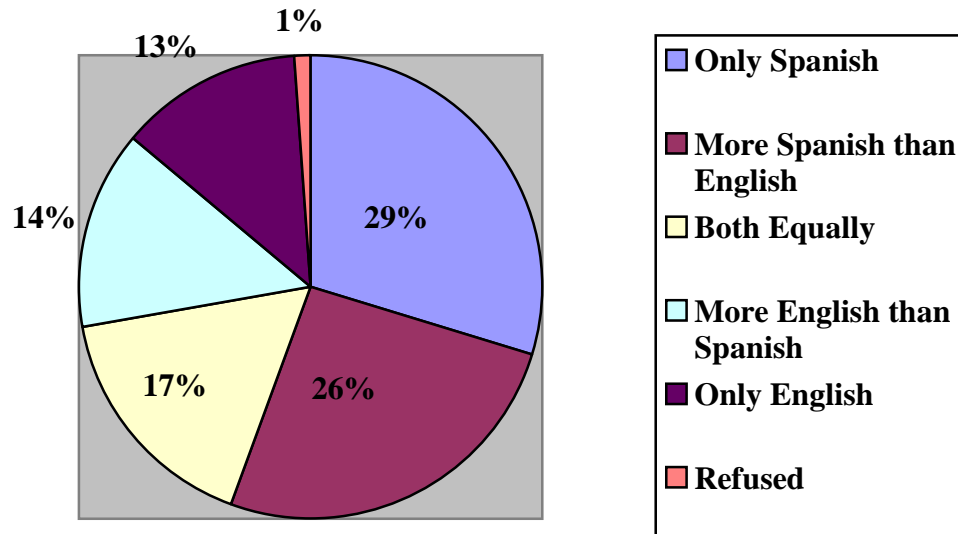
## Language skills

	Very well	Pretty well	Just a little	Not at all	Don't know	Refused
English	39	12	37	12	--	1
Spanish	53	31	10	5	--	1



## Language spoken at home

	Adults
Only Spanish	30
More Spanish than English	26
Both equally	17
More English than Spanish	14
Only English	13
Don't know	--
Refused	1



	Adults
Predominantly Spanish	56
Both equally	17
Predominantly English	17

